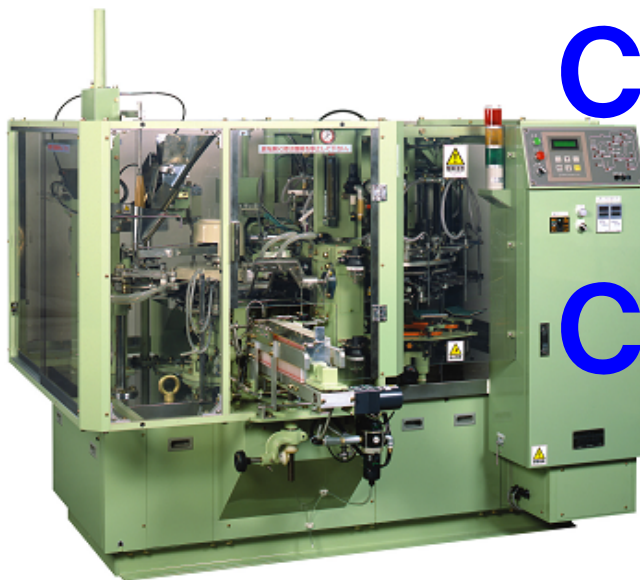


INVESTORS' GUIDE 2016/7

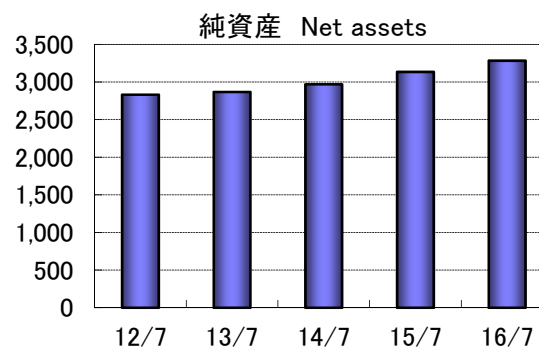
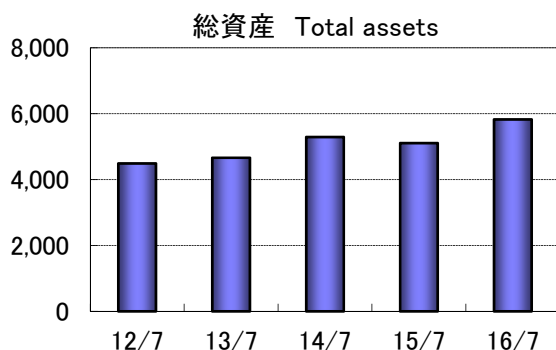
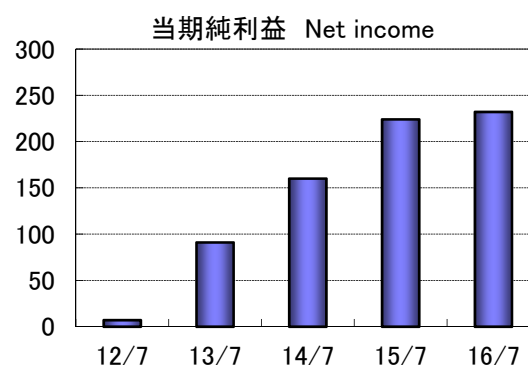
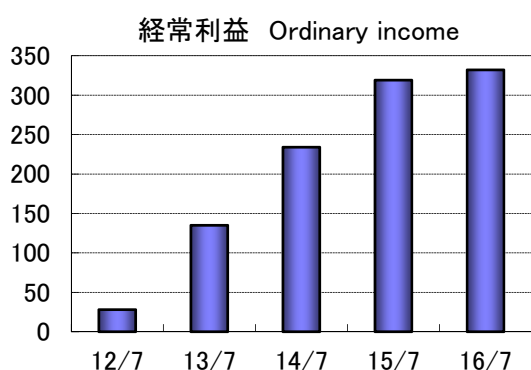
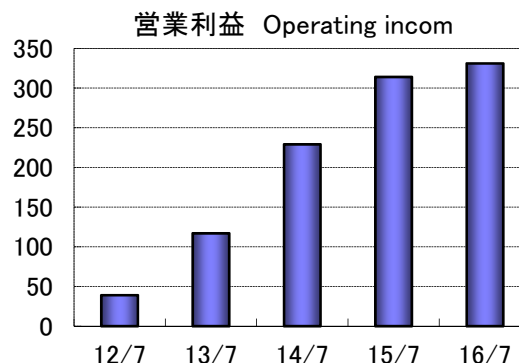
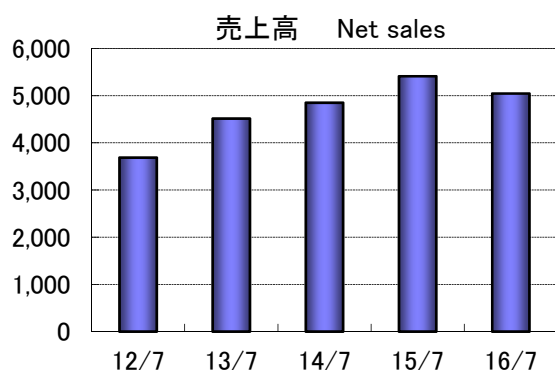
The total planner of packaging systems
GENERAL PACKER CO.,LTD.



Creativity & Challenge

財務ハイライト(単体) Financial Highlights(Non-Consolidated Basis)

(百万円/¥ millions)



(百万円/¥ millions)

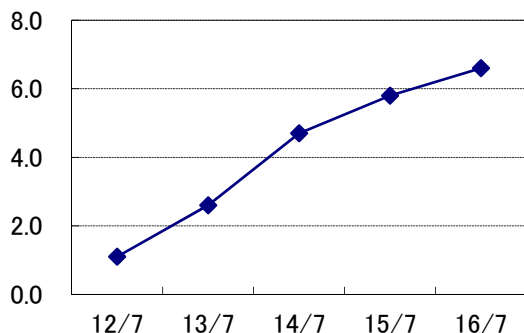
		2012/7	2013/7	2014/7	2015/7	2016/7
売上高	Net sales	3,687	4,513	4,850	5,411	5,044
	給袋自動包装機	1,962	2,427	1,779	2,248	2,982
	製袋自動包装機	316	252	497	689	317
	包装関連機器等	361	811	1,604	1,201	413
	保守消耗部品その他	1,047	1,021	968	1,272	1,331
営業利益	Operating income	39	117	229	314	331
経常利益	Ordinary income	28	135	234	319	332
当期純利益	Net income	7	91	160	224	232
総資産	Total assets	4,488	4,661	5,290	5,107	5,824
純資産	Net assets	2,830	2,866	2,968	3,133	3,282

○当社は連結子会社を擁しておりませんので、連結財務諸表は作成しておりません。

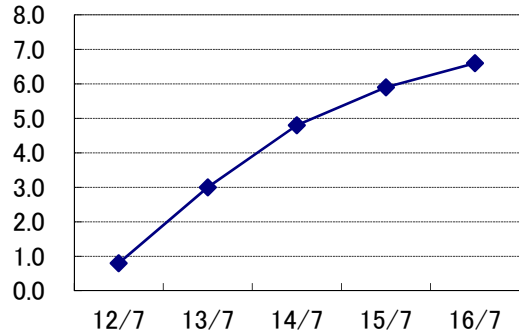
There are no consolidated financial statements since the company does not have any consolidated subsidiaries.

財務分析 Financial Analysis

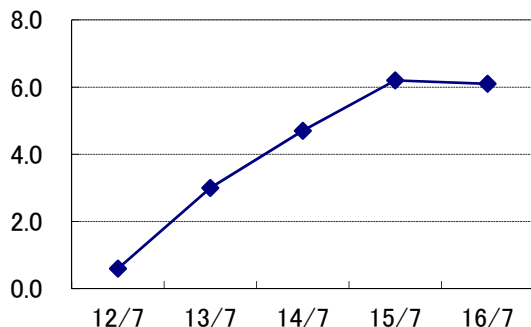
売上高営業利益率
(%) Ratio of operating income to net sales



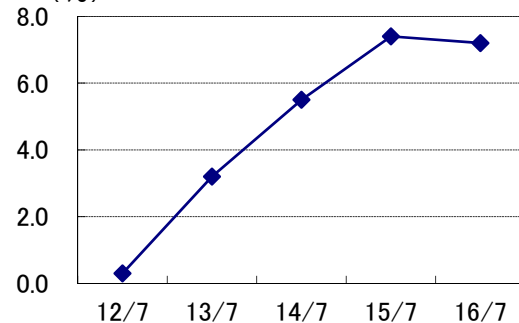
売上高経常利益率
(%) Ratio of ordinary income to net sales



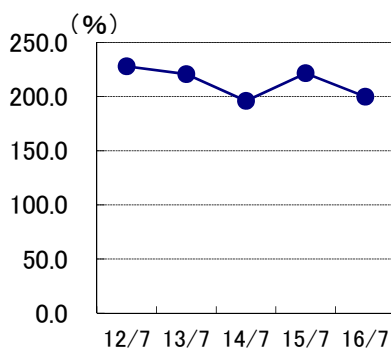
総資産経常利益率[ROA]
(%) Return on assets



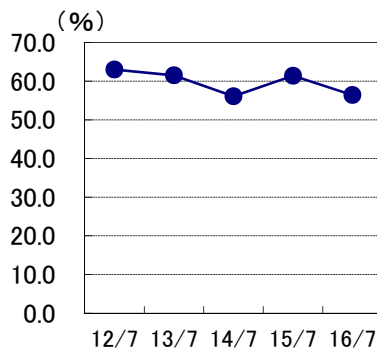
自己資本利益率[ROE]
(%) Return on equity



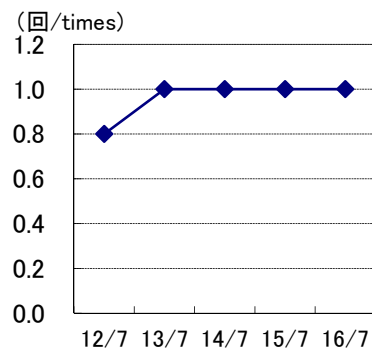
流動比率
Current ratio



自己資本比率
Owner's equity ratio



総資産回転率
Total assets turnover



(%、回)

		2012/7	2013/7	2014/7	2015/7	2016/7
売上高営業利益率(%)	Ratio of operating income to net sales(%)	1.1	2.6	4.7	5.8	6.6
売上高経常利益率(%)	Ratio of ordinary income to net sales(%)	0.8	3.0	4.8	5.9	6.6
総資産経常利益率[ROA](%)	Return on assets[ROA](%)	0.6	3.0	4.7	6.2	6.1
自己資本利益率[ROE](%)	Return on equity[ROE](%)	0.3	3.2	5.5	7.4	7.2
流動比率(%)	Current ratio(%)	227.9	220.7	196.0	221.5	199.9
自己資本比率(%)	Owner's equity ratio(%)	63.0	61.5	56.1	61.4	56.4
総資産回転率(回)	Total assets turnover(times)	0.8	1.0	1.0	1.0	1.0

○自己資本=純資産 Owner's equity=Net assets

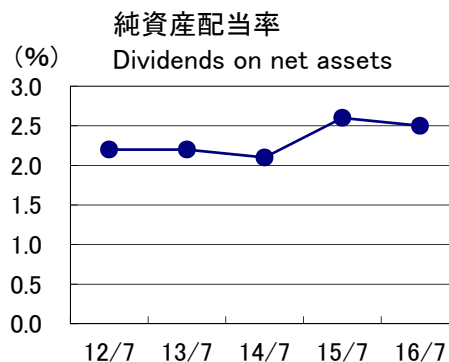
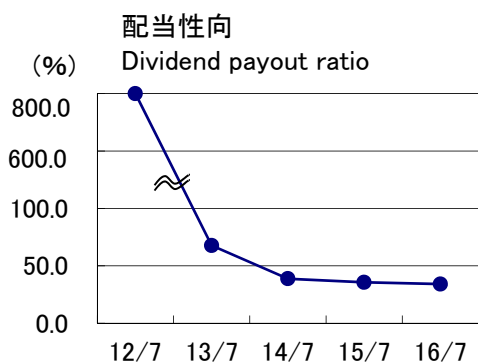
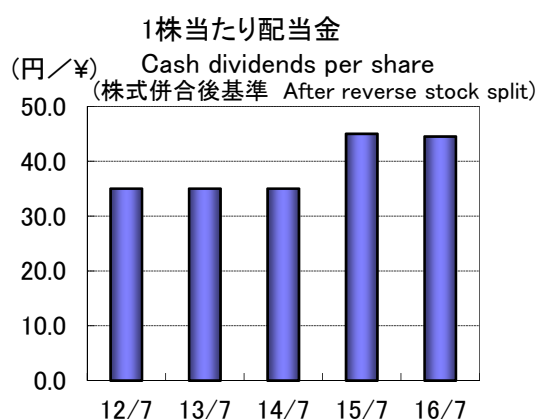
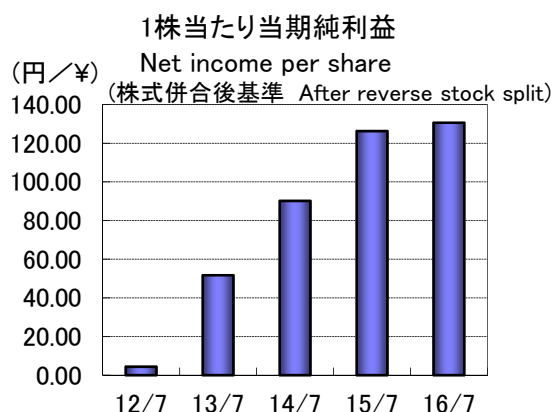
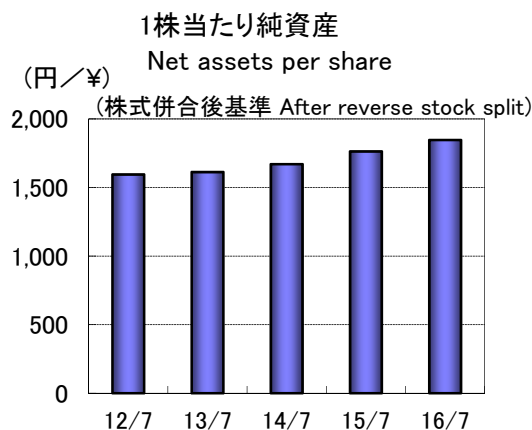
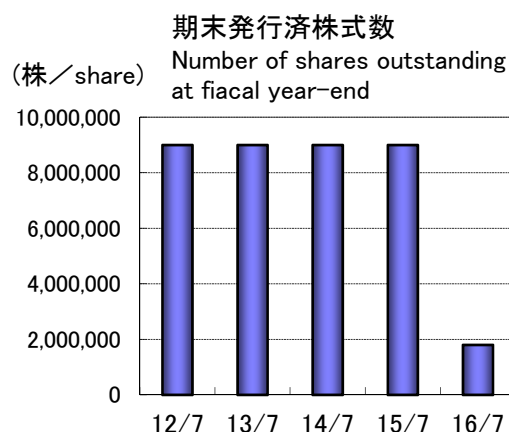
○ROA=経常利益÷期首・期末平均総資産×100(%) Return on assets=Ordinary income/Average total assets×100(%)

○ROE=当期純利益÷期首・期末平均自己資本×100(%) Return on equity=Net income/Average owner's equity×100(%)

○自己資本比率=自己資本÷総資産×100(%) Owner's equity ratio=Owner's equity/Total assets×100(%)

○総資産回転率=売上高÷期首・期末平均総資産(回) Total assets turnover=Net sales/Average total assets(times)

投資指標 Investment Indicators



		2012/7	2013/7	2014/7	2015/7	2016/7
期末発行済株式数(株)	Number of shares outstanding at fiscal year-end(share)	8,994,000	8,994,000	8,994,000	8,994,000	1,798,800
1株当たり純資産(円)	Net assets per share(¥) ※	1,594.90	1,612.55	1,670.20	1,763.15	1,846.67
1株当たり当期純利益(円)	Net income per share(¥) ※	4.40	51.70	90.15	126.28	130.63
1株当たり配当金(円)	Cash dividends per share(¥) ※	35.0	35.0	35.0	45.0	44.5
配当性向(%)	Dividend payout ratio(%)	791.8	67.7	38.8	35.6	34.1
純資産配当率(%)	Dividends on net assets(%)	2.2	2.2	2.1	2.6	2.5

※2016年2月1日付で普通株式5株につき1株の割合で株式併合を行っています。

1株当たりの数値は、株式併合の影響を反映して修正しております。

The Company conducted a reverse stock split at a ratio of one share for every five shares on February 1, 2016.

Figures per share have been adjusted to reflect the reverse stock split.

○1株当たり純資産=期末純資産÷期中平均発行済株式数

Net assets per share=Net assets/Average number of shares outstanding in each fiscal period

○1株当たり当期純利益=当期純利益÷期中平均発行済株式数

Net income per share=Net income/Average number of shares outstanding in each fiscal period

○配当性向=1株当たり配当金÷1株当たり当期純利益×100(%)

Dividend payout ratio=Cash dividends per share /Net income per share × 100(%)

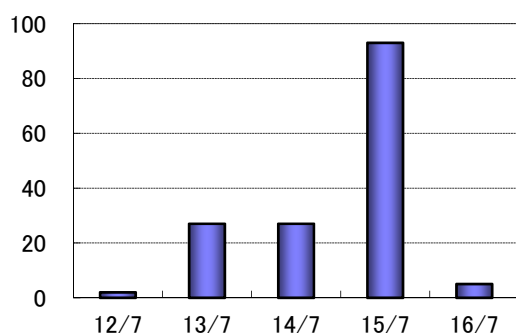
○純資産配当率=配当総額÷純資産×100(%)

Dividends on net assets=Total cash dividends/Net assets × 100(%)

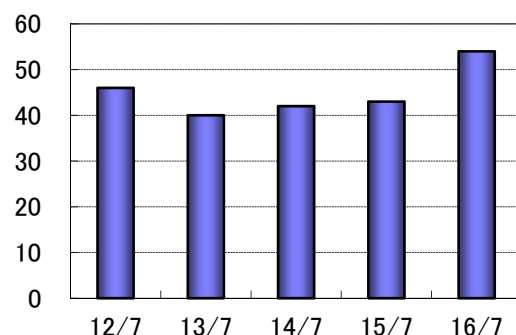
財務データ Financial Data

■設備投資その他 Capital expenditures and others

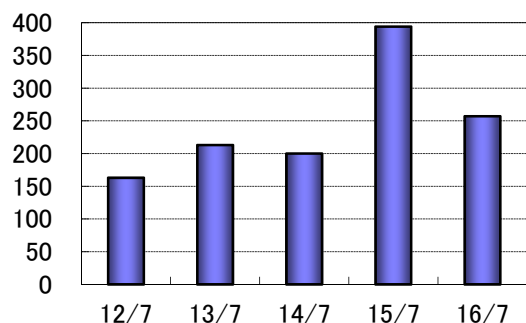
設備投資額 Capital expenditures



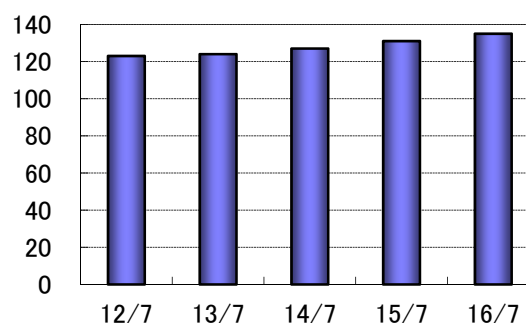
減価償却費 Depreciation and amortization



研究開発費 R&D expenses



従業員数 Number of employees



(百万円/¥ millions)

		2012/7	2013/7	2014/7	2015/7	2016/7
設備投資額	Capital expenditures	2	27	27	93	5
減価償却費	Depreciation and amortization	46	40	42	43	54
研究開発費	R&D expenses	163	213	200	394	257
従業員数(人)	Number of employees (persons)	123	124	127	131	135

■貸借対照表 Balance sheets

(百万円/¥ millions)

		2012/7	2013/7	2014/7	2015/7	2016/7
流動資産	Current assets	3,587	3,757	4,366	4,155	4,876
固定資産	Fixed assets	901	903	924	951	947
有形固定資産	Tangible fixed assets	816	807	793	795	758
無形固定資産	Intangible fixed assets	11	7	34	54	45
投資その他の資産	Investments and other assets	73	88	96	100	143
資産合計	Total assets	4,488	4,661	5,290	5,107	5,824
負債合計	Total liabilities	1,657	1,794	2,321	1,973	2,542
流動負債	Current liabilities	1,573	1,702	2,227	1,876	2,439
固定負債	Long-term liabilities	83	92	94	96	103
純資産合計	Total net assets	2,830	2,866	2,869	3,133	3,282
負債・純資産合計	Total liabilities and net assets	4,488	4,661	5,290	5,107	5,824

■キャッシュ・フロー Cash flows

(百万円/¥ millions)

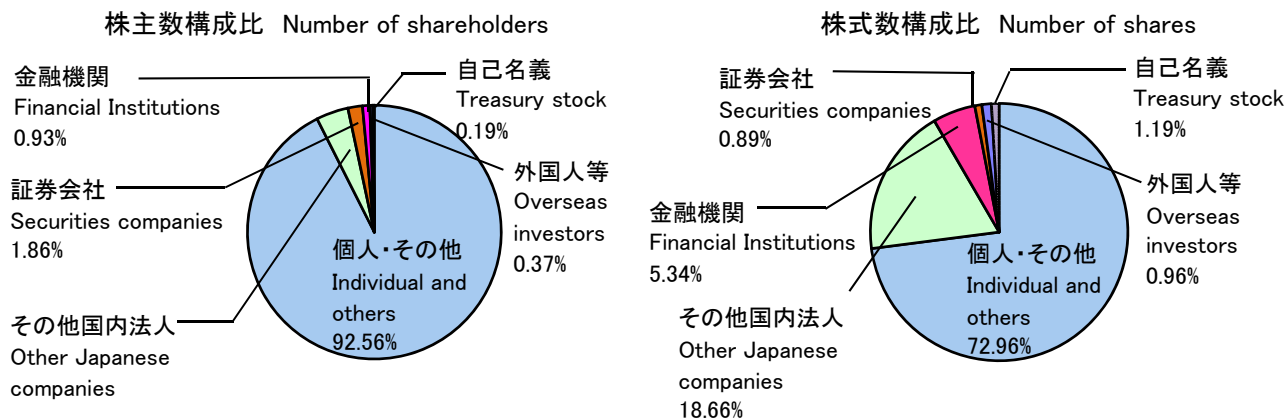
		2012/7	2013/7	2014/7	2015/7	2016/7
営業活動によるキャッシュ・フロー	Cash flows from operating activities	(30)	474	269	175	200
投資活動によるキャッシュ・フロー	Cash flows from investing activities	31	(77)	5	(219)	(23)
財務活動によるキャッシュ・フロー	Cash flows from financing activities	(59)	(60)	(61)	(65)	(75)
現金及び現金同等物期末残高	Cash and cash equivalents at end of year	1,423	1,771	1,985	1,877	1,978

投資家情報 Investor Information

■株式情報 Stock information

	(2016年7月31日現在)	(As of July 31,2016)
発行可能株式総数	Authorized number of shares:	5,600,000株 (shares)
発行済株式総数	Number of shares outstanding:	1,798,800株 (shares)
株主数	Number of shareholders:	538名 (persons)

■所有者別分布状況 Breakdown by type of shareholder



■株式メモ General Information

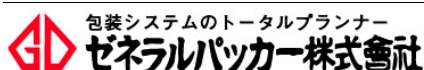
○決算期: 7月31日	Fiscal year-end: July 31
○定時株主総会: 毎年10月	Month of annual shareholders' meeting: Every October
○証券コード: 6267	Code number: 6267
○上場取引所: 東京(JASDAQ),名古屋	Stock listing: Tokyo(JASDAQ), Nagoya
○株主名簿管理人 日本証券代行株式会社	Administrator for Shareholders' Register JAPAN SECURITIES AGENTS, LTD

■会社概要 Corporate Information (2016年10月31日現在) (As of October 31,2016)

○社名: ゼネラルパッカー株式会社	Name of company: General Packer Co., Ltd.
○設立: 1966年2月 (創業1961年12月)	Establishes: February 1966 (Business inaugurated in December 1961)
○資本金: 2億5,157万7千円	Capitalization: ¥251,577 thousand
○事業内容 各種自動包装機械及び周辺装置の製造・販売 食品製菓機械の製造・販売	Main businesses Manufacture and sale of various types of packaging machines and peripheral equipment; manufacture and sale of food processing and confectionery production machinery.
○従業員数: 135名(単体)、162名(連結)	Employees: 135(Non-consolidated basis) 162(Consolidated basis)

■役員 Board of Directors

代表取締役社長	梅森 輝信	President: Terunobu Umemori
専務取締役	小関 幸太郎	Managing Director: Koutarou Ozeki
常務取締役	鈴木 完繁	Managing Director: Kanshige Suzuki
取締役	牧野 研二	Director: Kenji Makino
取締役	尾関 津義	Director: Tsuyoshi Ozeki
取締役	井土 信行	Director: Nobuyuki Ido
常勤監査役	福井 義雄	Standing Auditor: Yoshio Fukui
監査役	村橋 泰志	Auditor: Hiroshi Murahashi
監査役	浅井 一郎	Auditor: Ichirou Asai



The total planner of packaging systems
GENERAL PACKER CO.,LTD.

本社・工場
〒481-8601 愛知県北名古屋市宇福寺神明65番地
Tel.(0568)23-3111(代) Fax.(0568)22-3222
ホームページ: <http://www.general-packer.co.jp/>

Head office
65 Shinmei Ubukuji Kitanagoya-shi,Aichi 481-8601, Japan
Tel. +81-568-23-3111 Fax. +81-568-22-3222
Home Page: <http://www.general-packer.co.jp/>