

INVESTORS' GUIDE 2009/7

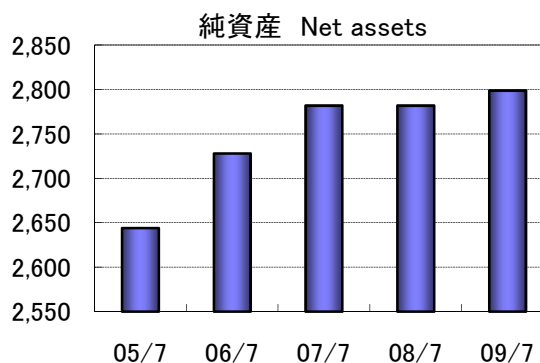
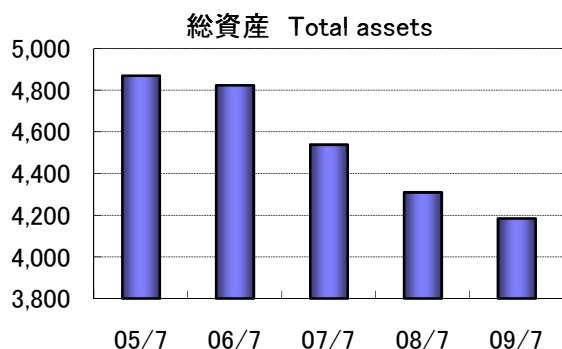
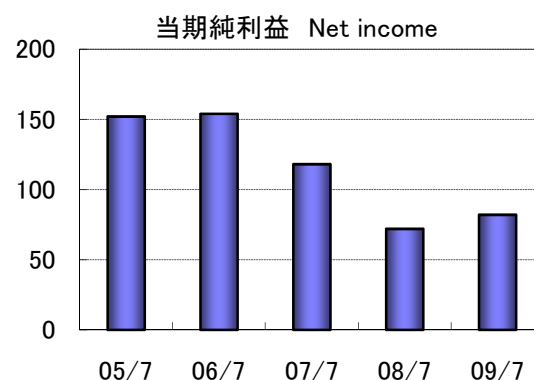
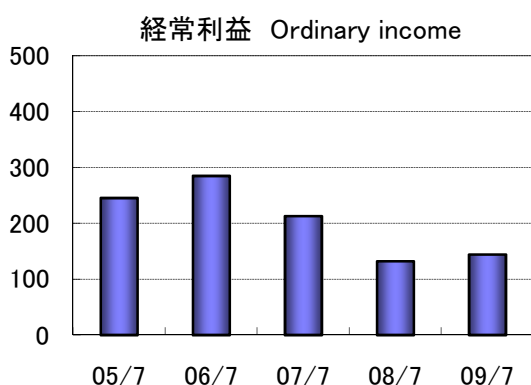
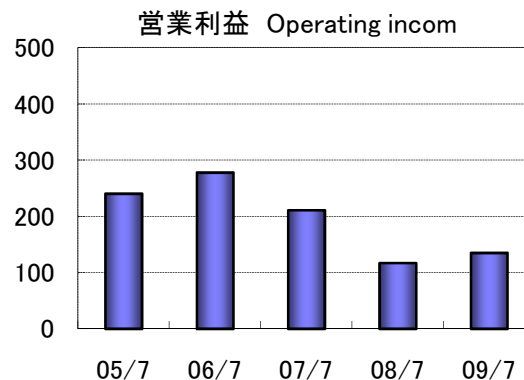
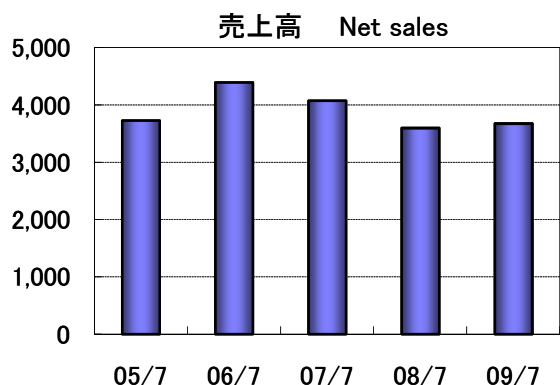
The total planner of a packaging system
GENERAL PACKER CO.,LTD.



Creativity & Challenge

財務ハイライト(単体) Financial Highlights(Non-Consolidated Basis)

(百万円/¥ millions)



(百万円/¥ millions)

		2005/7	2006/7	2007/7	2008/7	2009/7
売上高	Net sales	3,726	4,394	4,074	3,597	3,674
給袋自動包装機	Pouch filling-sealing machines	1,854	2,018	1,987	1,802	1,647
製袋自動包装機	Pouch forming-filling-sealing machines	662	603	607	546	595
ガス充填自動包装機	Gas-flushing type packaging machines	166	89	129	97	189
包装関連機器等	Packaging-related equipment and systems	409	918	411	183	306
保守消耗部品その他	Other	632	765	938	966	934
営業利益	Operating income	240	278	211	117	135
経常利益	Ordinary income	245	285	213	132	144
当期純利益	Net income	152	154	118	72	82
総資産	Total assets	4,870	4,824	4,539	4,310	4,185
純資産	Net assets	2,644	2,728	2,782	2,782	2,799

○当社は連結子会社を擁しておりませんので、連結財務諸表は作成しておりません。

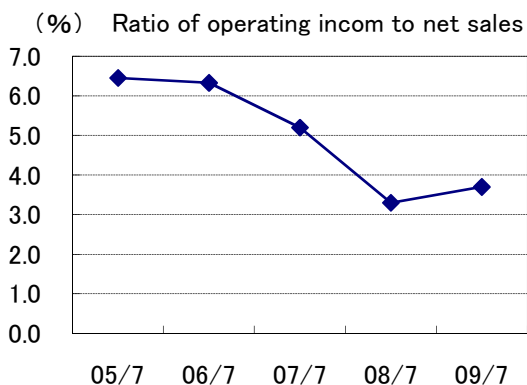
There are no consolidated financial statements since the company does not have any consolidated subsidiaries.

○2006年7月期から「役員賞与に関する会計基準」(企業会計基準第4号)を適用しております。

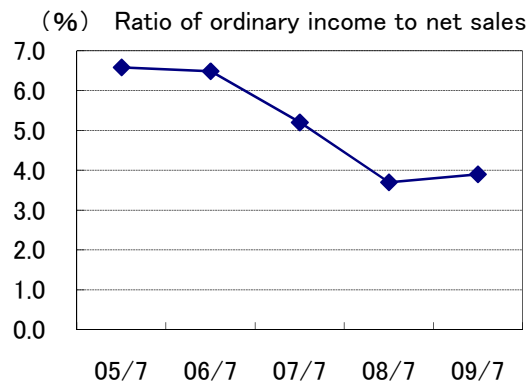
From the fiscal year ended July 2006, the Company adopted the new accounting standard for Bonuses to Directors (Accounting Standards Board Statement No.4).

財務分析 Financial Analysis

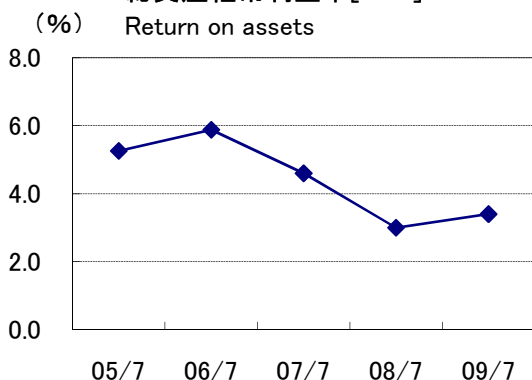
売上高営業利益率



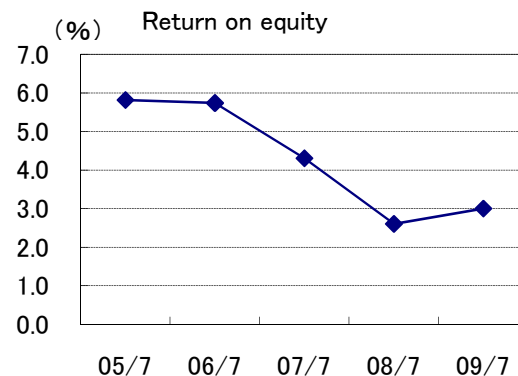
売上高経常利益率



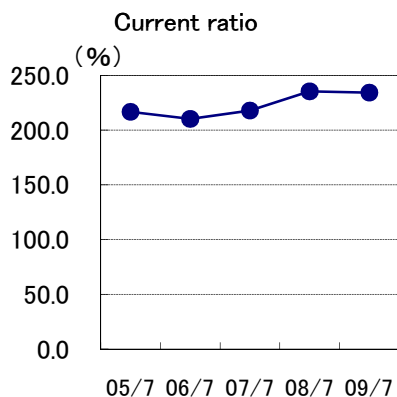
総資産経常利益率[ROA]



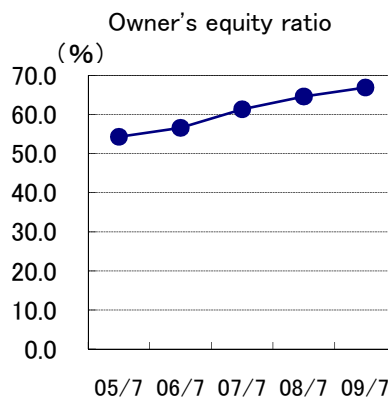
自己資本利益率[ROE]



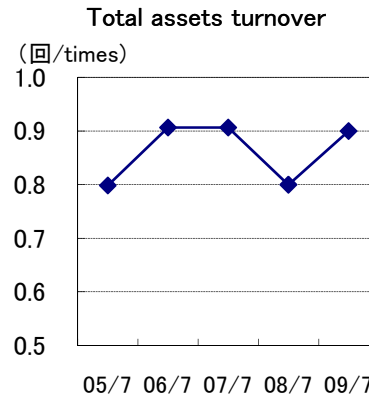
流動比率



自己資本比率



総資産回転率



(%、回)

		2005/7	2006/7	2007/7	2008/7	2009/7
売上高営業利益率(%)	Ratio of operating income to net sales(%)	6.5	6.3	5.2	3.3	3.7
売上高経常利益率(%)	Ratio of ordinary income to net sales(%)	6.6	6.5	5.2	3.7	3.9
総資産経常利益率[ROA](%)	Return on assets[ROA](%)	5.3	5.9	4.6	3.0	3.4
自己資本利益率[ROE](%)	Return on equity[ROE](%)	5.8	5.7	4.3	2.6	3.0
流動比率(%)	Current ratio(%)	216.4	210.1	217.6	235.2	234.1
自己資本比率(%)	Owner's equity ratio(%)	54.3	56.6	61.3	64.6	66.9
総資産回転率(回)	Total assets turnover(times)	0.8	0.9	0.9	0.8	0.9

○自己資本=純資産 Owner's equity=Net assets

○ROA=経常利益÷期首・期末平均総資産×100(%) Return on assets=Ordinary income/Average total assets×100(%)

○ROE=当期純利益÷期首・期末平均自己資本×100(%) Return on equity=Net income/Average owner's equity×100(%)

○自己資本比率=自己資本÷総資産×100(%) Owner's equity ratio=Owner's equity/Total assets×100(%)

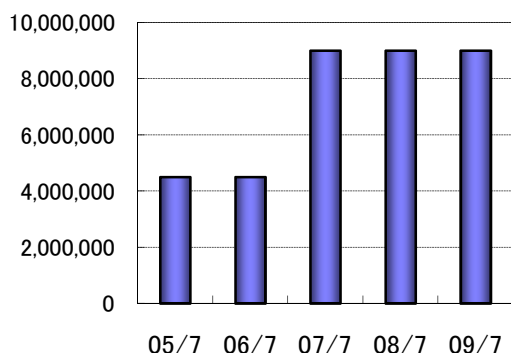
○総資産回転率=売上高÷期首・期末平均総資産(回) Total assets turnover=Net sales/Average total assets(times)

○2006年7月期から「役員賞与に関する会計基準」(企業会計基準第4号)を適用しております。

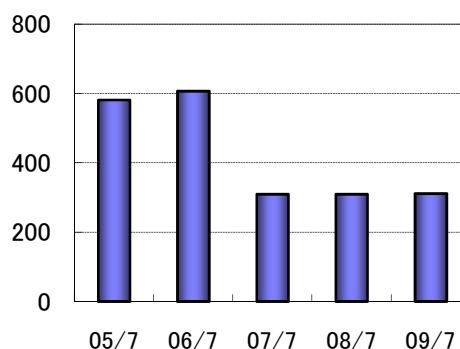
From the fiscal year ended July 2006, the Company adopted the new accounting standard for Bonuses to Directors (Accounting Standards Board Statement No.4).

投資指標 Investment Indicators

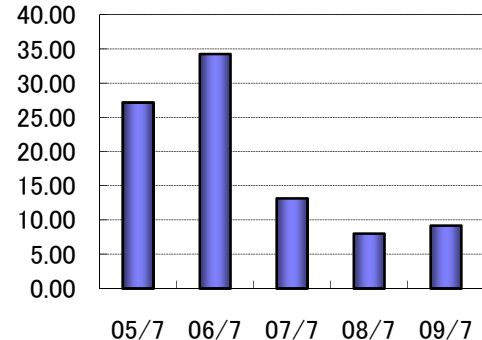
期末発行済株式数
(株/share) Number of shares outstanding



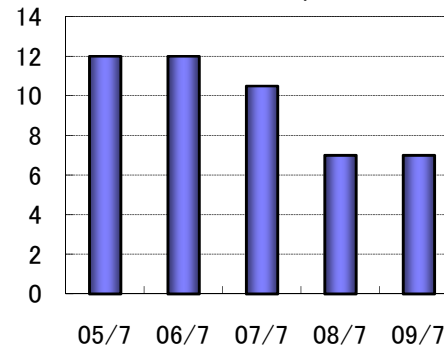
1株当たり純資産
(円/¥) Net assets per share



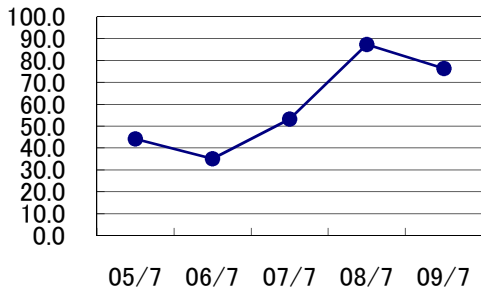
1株当たり当期純利益
(円/¥) Net income per share



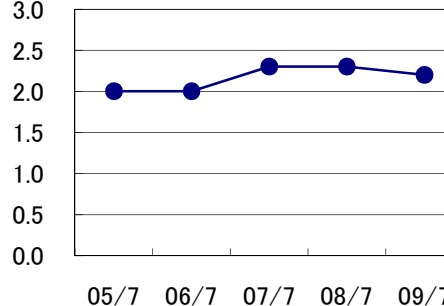
1株当たり配当金
(円/¥) Cash dividends per share



配当性向
(%) Dividend payout ratio



純資産配当率
(%) Dividends on net assets



		2005/7	2006/7	2007/7	2008/7	2009/7
期末発行済株式数(株)	Number of shares outstanding at fiscal year-end(share)	4,497,000	4,497,000	8,994,000	8,994,000	8,994,000
		*2007年2月:分割(1⇒2) 2-for-1 stock split (2/2007)				
1株当たり純資産(円)	Net assets per share(¥)	581.50	607.00	309.50	309.57	311.42
1株当たり当期純利益(円)	Net income per share(¥)	27.19	34.29	13.17	8.03	9.19
1株当たり配当金(円)	Cash dividends per share(¥)	12	12	10.5	7	7
配当性向(%)	Dividend payout ratio(%)	44.1	35.0	53.1	87.2	76.2
純資産配当率(%)	Dividends on net assets(%)	2.0	2.0	2.3	2.3	2.2

○1株当たり純資産=期末純資産÷期中平均発行済株式数

Net assets per share=Net assets/Average number of shares outstanding in each fiscal period

○1株当たり当期純利益=当期純利益÷期中平均発行済株式数

Net income per share=Net income/Average number of shares outstanding in each fiscal period

○配当性向=1株当たり配当金÷1株当たり当期純利益×100(%)

Dividend payout ratio=Cash dividends per share /Net income per share × 100(%)

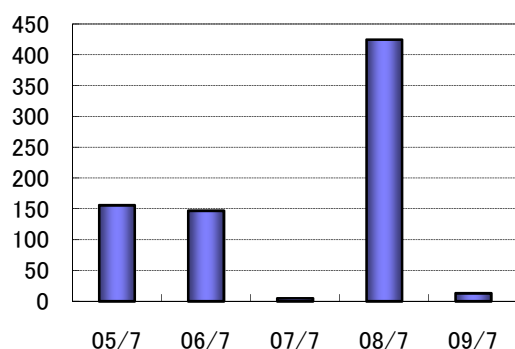
○純資産配当率=配当総額÷純資産×100(%)

Dividends on net assets=Total cash dividends/Net assets × 100(%)

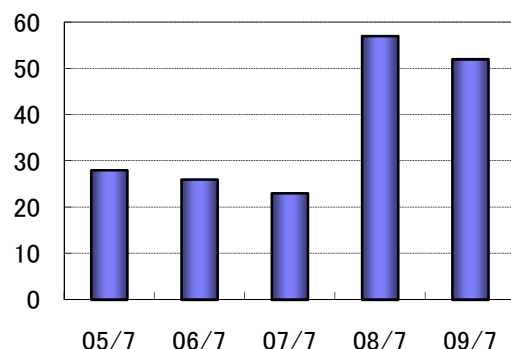
財務データ Financial Data

■設備投資その他 Capital expenditures and others

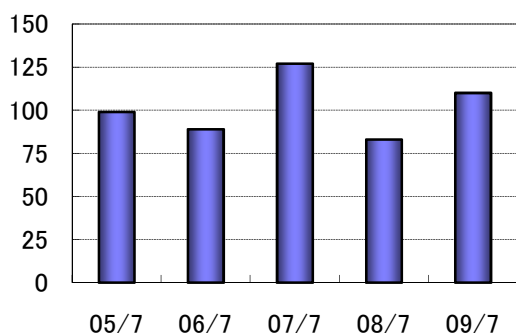
設備投資額 Capital expenditures



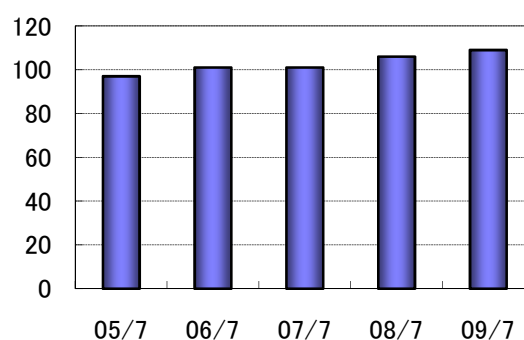
減価償却費 Depreciation and amortization



研究開発費 R&D expenses



従業員数 Number of employees



(百万円/¥ millions)

		2005/7	2006/7	2007/7	2008/7	2009/7
設備投資額	Capital expenditures	156	147	5	425	13
減価償却費	Depreciation and amortization	28	26	23	57	52
研究開発費	R&D expenses	99	89	127	83	110
従業員数(人)	Number of employees (persons)	97	101	101	106	109

■貸借対照表 Balance sheets

(百万円/¥ millions)

		2005/7	2006/7	2007/7	2008/7	2009/7
流動資産	Current assets	4,184	3,883	3,340	3,103	3,075
固定資産	Fixed assets	685	940	1,199	1,207	1,109
有形固定資産	Tangible fixed assets	497	619	857	964	926
無形固定資産	Intangible fixed assets	2	2	2	6	7
投資その他の資産	Investments and other assets	185	319	339	236	176
資産合計	Total assets	4,870	4,824	4,539	4,310	4,185
負債合計	Total liabilities	2,225	2,095	1,757	1,528	1,385
流動負債	Current liabilities	1,933	1,848	1,534	1,319	1,313
固定負債	Long-term liabilities	292	247	222	208	72
純資産合計	Total net assets	2,644	2,728	2,782	2,782	2,799
負債・純資産合計	Total liabilities and net assets	4,870	4,824	4,539	4,310	4,185

■キャッシュ・フロー Cash flows

(百万円/¥ millions)

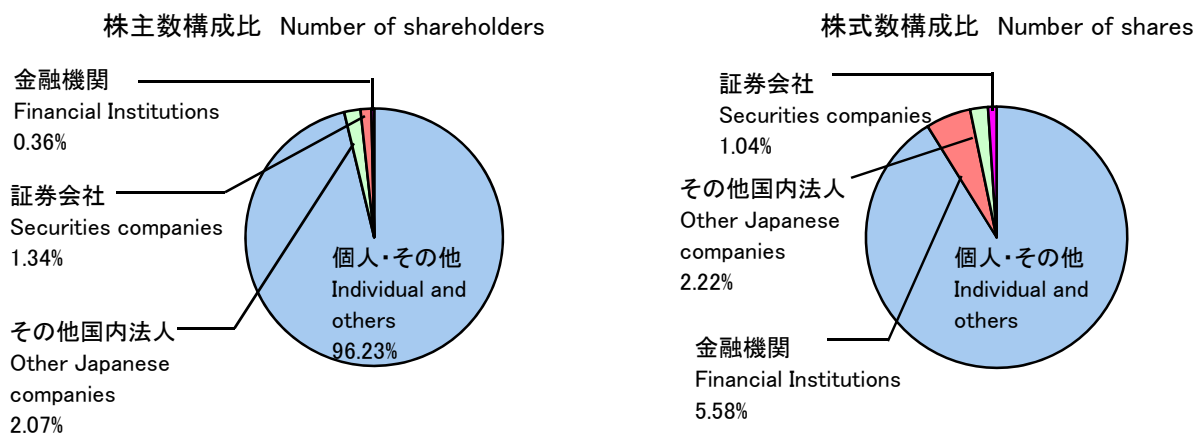
		2005/7	2006/7	2007/7	2008/7	2009/7
営業活動によるキャッシュ・フロー	Net cash provided by(used in)operating activities	166	371	(137)	15	322
投資活動によるキャッシュ・フロー	Net cash provided by(used in)investing activities	(99)	(284)	(175)	(251)	3
財務活動によるキャッシュ・フロー	Net cash provided by(used in)financing activities	(62)	(54)	(61)	(62)	(62)
現金及び現金同等物期末残高	Cash and cash equivalents at end of year	1,538	1,571	1,196	897	1,161

投資家情報 Investor Information

■ 株式情報 Stock information

	(2009年7月31日現在)	(As of July 31,2009)
発行可能株式総数	Authorized number of shares:	28,000,000株
発行済株式総数	Number of shares outstanding:	8,994,000株
株主数	Number of shareholders:	822名

■ 所有者別分布状況 Breakdown by type of shareholder



■ 株式メモ General Information

- | | |
|------------------------|--|
| ○決算期: 7月31日 | Fiscal year-end: July 31 |
| ○定時株主総会: 毎年10月 | Month of annual shareholders' meeting: Every October |
| ○証券コード: 6267 | Code number: 6267 |
| ○上場取引所 | Stock listing: JASDAQ |
| ○株主名簿管理人
日本証券代行株式会社 | Administrator for Shareholders' Register
JAPAN SECURITIES AGENTS, LTD |

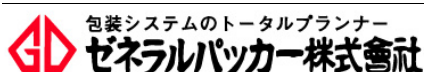
■ 会社概要 Corporate Information

(2009年10月31日現在) (As of October 31,2009)

- | | |
|---|---|
| ○社名: ゼネラルパッカー株式会社 | Name of company: General Packer Co., Ltd. |
| ○設立: 1966年2月
(創業1961年12月) | Establishes: February 1966
(Business inaugurated in December 1961) |
| ○資本金: 2億5,157万7千円 | Capitalization: ¥251,577 thousand |
| ○事業内容
各種自動包装機・荷造用機械及び
周辺装置の製造・販売・修理、
それらに附帯する一切の業務 | Main businesses
Manufacture, sale, and maintenance of various types
of packaging machines, packing machines, and
peripheral equipment; provision of full range of related services |
| ○従業員数: 107名 | Employees: 107 |

■ 役員 Board of Directors

- | | |
|---------------|-----------------------------------|
| 代表取締役社長 梅森 輝信 | President: Terunobu Umemori |
| 取締役 工藤 誠一 | Director: Seiichi Kudo |
| 取締役 鈴木 完繁 | Director: Kanshige Suzuki |
| 取締役 小関 幸太郎 | Director: Koutarou Ozeki |
| 取締役 池田 勇次 | Director: Yuji Ikeda |
| 常勤監査役 余川 善明 | Standing Auditor: Yoshiaki Yogawa |
| 監査役 村橋 泰志 | Auditor: Hiroshi Murahashi |
| 監査役 浅井 一郎 | Auditor: Ichirou Asai |



The total planner of a packaging system
GENERAL PACKER CO.,LTD.

本社・工場
〒481-8601 愛知県北名古屋市長福寺神明65番地
Tel.(0568)23-3111(代) Fax.(0568)22-3222
ホームページ: <http://www.general-packer.co.jp/>

Head office
65 Shinmei Ubukuji Kitanagoya-shi,Aichi 481-8601, Japan
Tel. +81-568-23-311 Fax. +81-568-22-3222
Home Page: <http://www.general-packer.co.jp/>